

# STANDING SEAM MULTIWALL ARCOPLUS 684



## ABOUT ARCOPLUS 684

This multiwall system of co-extruded 4-wall polycarbonate panels is the latest and greatest way to let light in while still providing shade and UV protection. The secret? These panels connect using a click-on system and aluminum profiles for seamless perfection on every project.

Available in bronze for maximum UV protection.

### Availability:

- Color Bronze
- Thickness 8 MM
- Width 23.62"
- Length 16' & 24'

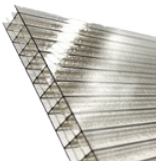
## BENEFITS



- Guaranteed leak-proof due to standing seam and clip system. Never screw into sheets again!
- Heat insulation drops temperatures under pergola
- 4-wall panels for higher impact resistance and durability over time VS. standard 2-wall panels
- Sleek, seamless look due to clip system and end caps
- Panels are UV resistant to block sun while still bringing in light

## COMPONENTS

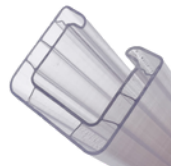
4-wall polycarbonate panels



Plastic end caps



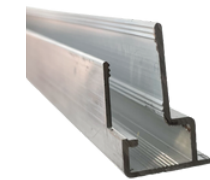
Plastic profile connectors



Aluminum brackets



Vent tape



Aluminum block covers



Bronze powder coated block covers



Black powder coated block covers



800 - 231 - 4175 | [sales@acplastics.com](mailto:sales@acplastics.com) | [acplastics.com](http://acplastics.com)  
Colorado Springs, CO | Houston, TX | Schiller Park, IL

# STANDING SEAM MULTIWALL ARCOPLUS 684



## USE AND MAINTENANCE

- Do not store material where it is exposed to sunlight with the film masking still on. The heat can melt it onto the sheet and make it difficult to remove.
- Make sure to install material correctly with the UV protected side facing up and remove all film masking after installation.
- Cover open flute side with aluminum vent tape for protection.
- Clean panels with water and neutral soap.
- Allow for thermal expansion.

### APPLICATIONS:

- Residential patios, carports, and pergolas
- Curved roofing
- Covered walkways
- Large skylights
- Roofing & glazing systems for commercial and residential architecture



## INSTALLATION

1. Remove film masking from bottom of sheet.
2. Peel back 2" of film on top side and place vent tape over flutes.
3. Install block covers over taped flutes.
4. Install the first panel and apply brackets every 36" or less directly onto the structure.
5. Continue fastening remaining panels and add profile connectors to secure the seam.
6. Install endcaps at the end of each profile connector.
7. Trim the overage at the end of the structure. Apply vent tape and install block covers.



800 - 231 - 4175 | [sales@acplastics.com](mailto:sales@acplastics.com) | [acplastics.com](http://acplastics.com)  
Colorado Springs, CO | Houston, TX | Schiller Park, IL